



ROTHSCHILD
FOUNDATION

Rothschild Foundation

“The Rothschild Foundation is a charity supporting arts and heritage, the environment and social welfare by awarding grants, fostering dialogue and debate, and through our support of Waddesdon Manor.”

- Privately endowed Foundation.
- Family are involved in decision making.
- Give away around £8m a year in all grant making.

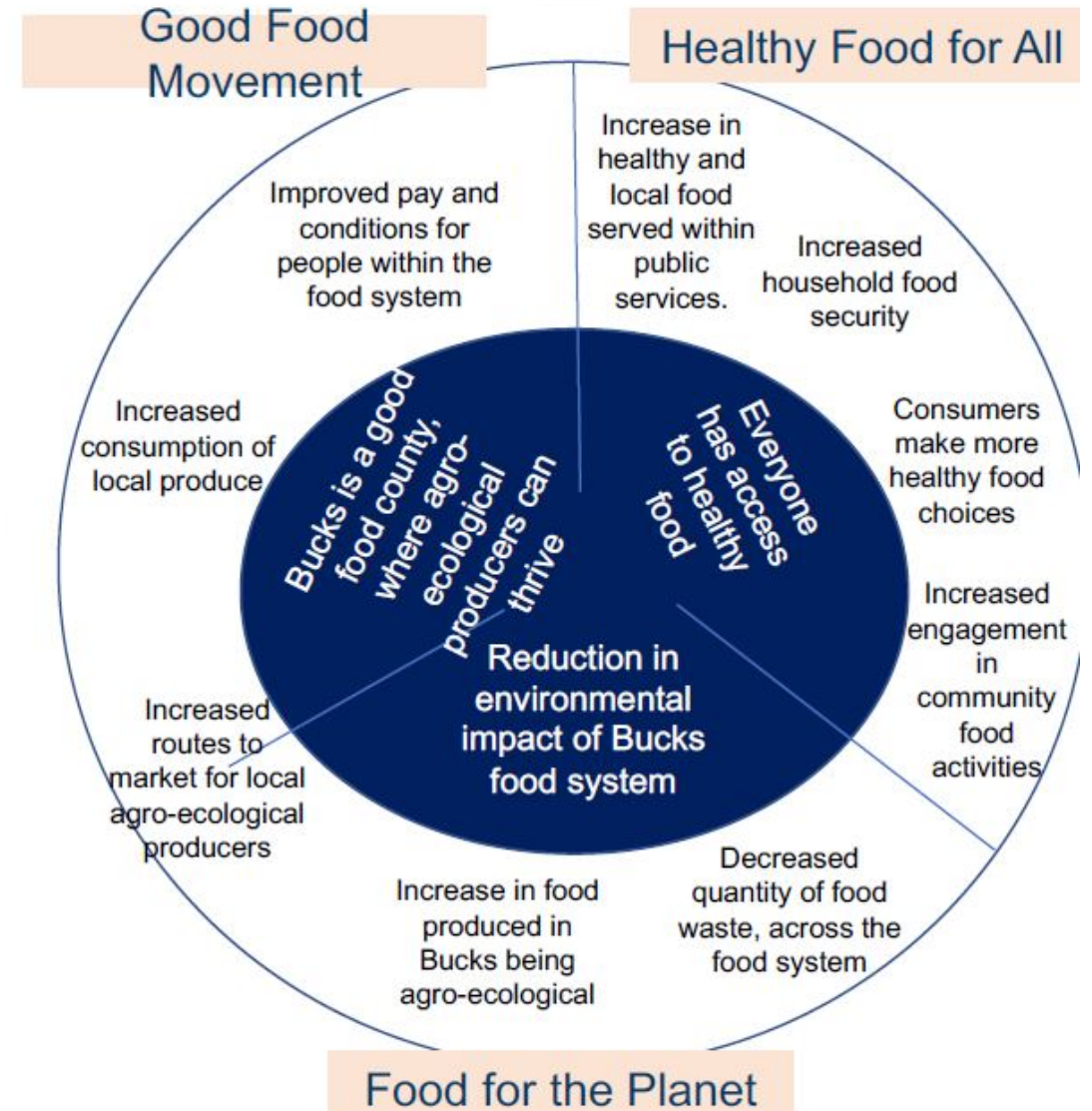


- Around £3m of funding provided annually in Bucks, split into three themes
- Grants are provided for up to three years and can be for project, core or capital costs
- Grants limited to Bucks; Milton Keynes is out of scope.



Sustainable Food Systems– A strategic grant-making priority

- Through our strategic funding we hope to contribute to a Bucks food system that is sustainable for people and the environment.
- We have funded the Bucks Food Partnership and worked closely with stakeholders to think about what the RF can offer.
- We have developed a Theory of Change for the RF's contribution this area.
- Our focus has been linked to the pandemic response and the impact of the cost of living crisis, however we are keen to fund in all three areas as well as encouraging system-wide partnerships.





Core funding to support growing, cookery and veg boxes for local families



Funding to increase the capacity of the organisation to deliver education programmes, food production and wellbeing opportunities.



Funding for the school engagement programme, where students visit farms, grow vegetables and learn about sustainable food production.

- Local grants programme for Bucks-based organisations addressing societal needs.
- Grants available up to £10k per year for three years.
- Particular focus on under-represented groups, such as minoritised communities, LGTBQ and disabled people.
- Can support predominantly environmental/conservation charities where there is a link to community engagement or wellbeing.



What next?

<https://rothschildfoundation.org.uk/buckinghamshire-grants/>

Get in touch:

David Terrace

David.terrace@rothschildfoundation.org.uk

07885881559

1. Read the overview of our [Community](#) and [Strategic Fund](#) and decide which one is relevant to your organisation.
2. Review the application guidance for your chosen programme.
3. Create an account on the Rothschild Foundation's [grant application portal](#) or log in to your existing account.
4. Take our quiz and confirm you're able to apply.
5. If you would like to talk to us about your application you can set up a meeting or share pre-application questions by emailing: grants@rothschildfoundation.org.uk
6. Prepare and submit your application through the online portal.
7. We may wish to discuss your plans further and ask you to share more information or answer particular questions about your proposal.
8. Hear the outcome of your application. Applications of under £30,000 will hear the outcome of funding within 2-3 months. Applications over £30,000 will be discussed at Trustees meetings in July and November each year and announced afterwards. Applications for each Trustee Meeting will need to be received by the Grants Team approximately 4 months prior to the Trustee Meeting.